

# Sukkahs.com

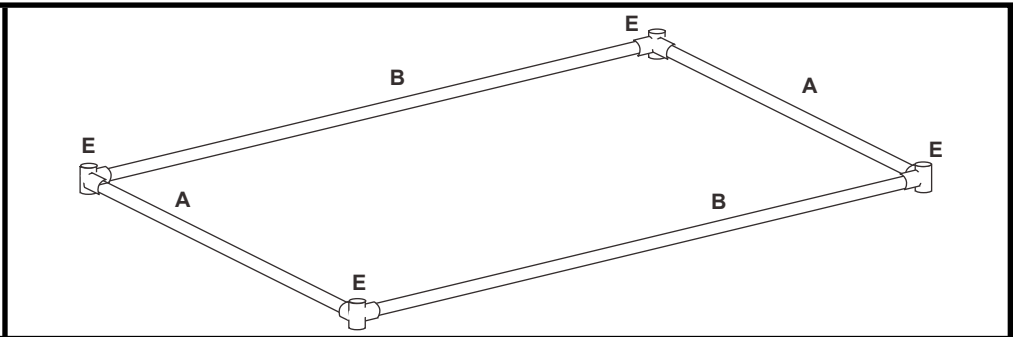
## 6' x 8' Canvas Sukkah Instructions

Actual Size: 5'10" X 7'7"

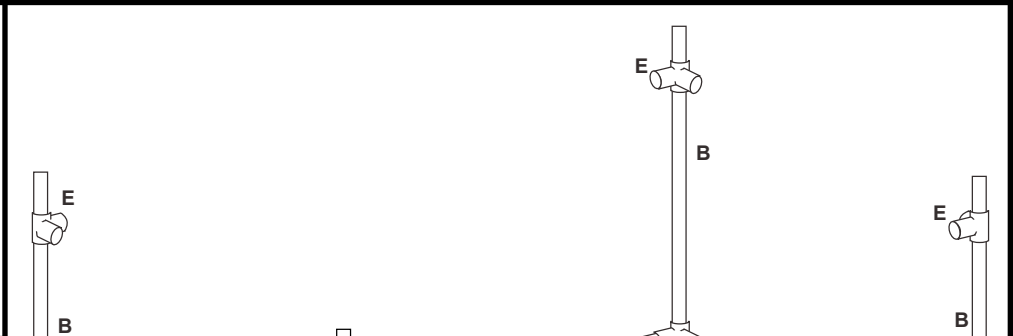
Read instructions before assembling Sukkah. You will need a step ladder.



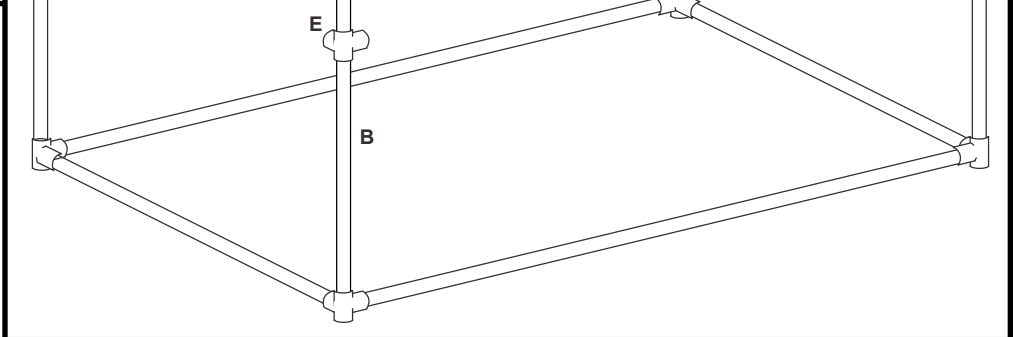
**Step 1.** Lay out the poles & Fittings (screws facing up) in the shape of the Sukkah. Insert poles into fittings, without blocking the hole for the upright. Then tighten screws with the hex key till tight.



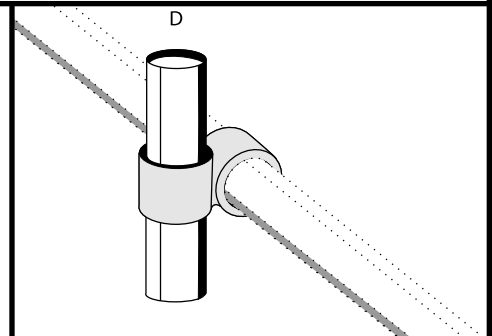
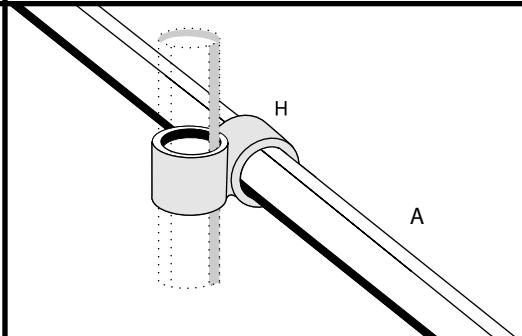
**Step 2.** Insert uprights into fittings till flush with the floor, and then tighten screws.



**Step 3.** Attach top fitting about 1-1/2 inch down on the pole (fitting can be moved up or down to tighten or loosen canvas), and then tighten screw until tight.



**Step 4.** Insert the (D) pole through door fitting (H) and tighten, then insert the (A) pole through the fitting (H) don't tighten before attaching canvas.



**Step 5.** First insert the (A) poles into fittings and tighten, then insert the (B) poles into fittings, and tighten.

